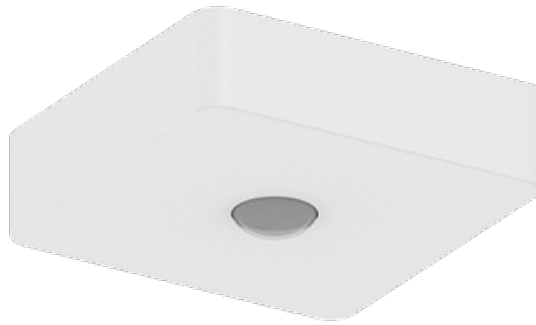


# LUMI-S WH 250 E1/ST XWB

Kod ElektriKo: 109443 Kod Glamox: LUM598015



**UWAGA:** Zdjęcie poglądowe dla całej rodziny produktów.

## Dane techniczne:

- Czas pracy na baterii **1,0 h**

Ceiling mounted escape route emergency lighting according to all relevant European standards.

E1 / ST means that this item has a built-in emergency light for minimum 1 hour duration. It tests itself according to European emergency light standards. Indicator LEDs on the product communicate the test results.

Item No.	LUM593376
GTIN	5901155933760
Stock status	A